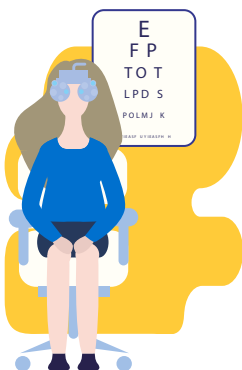
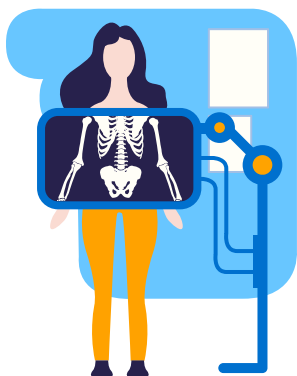


# CHIREC

## MEDICAL CHECK-UPS

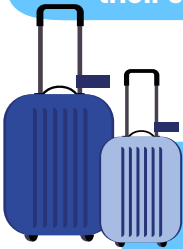


[www.chirec.be](http://www.chirec.be)

## A MEDICAL CHECK-UP, FOR WHOM?



Each individual  
who wishes to check  
their state of health



Expats

Companies willing  
to offer a health check-up  
to their employees or their  
customers.



*'Being healthy improves  
quality of life  
and work performance.'*



## PRACTICAL INFORMATION

*Where do the check-ups take place?*

DELTA HOSPITAL

**Info & appointments :**

☎ 02/434 81 15

checkup.delta@chirec.be

CITY CLINIC

**Info & appointments :**

☎ 02/434 20 00

checkup.cityclinic@chirec.be

MEDICAL CENTRE EDITH CAVELL

**Info & appointments :**

☎ 02/434 25 45

checkup.cavell@chirec.be

MEDICAL CENTRE PARK LEOPOLD

**Info & appointments :**

☎ 02/434 57 60

checkup.cpl@chirec.be

## PERSON OF CONTACT FOR COMPANIES

CÉLINE DE VOS

celine.devos@chirec.be

☎ 0492/ 14 36 26

## A MEDICAL CHECK-UP, WHY?

Nowadays, stress, pollution, smoking, alcohol, an unbalanced diet, a sedentary lifestyle are known to be major risk factors for cardiovascular disease and cancer.

Medical check-ups help to ensure your health and prevent these diseases. An illness discovered earlier allows for a more effective, less time-consuming treatment with a greater chance of recovery.

Chirec's priority is to offer personalized care by a competent team using state-of-the-art technology. We offer a multidisciplinary patient-centric organization in a modern and comfortable infrastructure.

Your check-up is established according to your profile (medical history, age, gender...). Insofar as possible, all examinations will be done in half a day.

A breakfast will be offered.

A medical report with the results of the examinations and personalized recommendations will be sent to you. You will also find advice in terms of lifestyle.

RESPECT FOR PROFESSIONAL CONFIDENTIALITY

## STANDARD EXAMINATION PROCESS

### INTERNAL MEDICINE CONSULTATION

- Anamnesis
- Complete clinical examination
- Lifestyle analysis, ...

### CLINICAL BIOLOGY

- Blood and urine tests

### CARDIOLOGY

- Resting ECG & Cardiac stress test

### ABDOMINAL ULTRASOUND

### CHEST X-RAY

- On medical advice

### OPHTHALMOLOGY CONSULTATION

- Consultation including visual acuity and ocular tonometry
- Non-dilated fundus
- Biomicroscopy

### ENT

- Full exam
- Audiometry
- Fibroscopy on medical advice

### GYNAECOLOGICAL CHECK-UP

- Smear test
- Pelvic ultrasound
- Breast examination

### SENOLOGY

- Mammogram / Breast ultrasound scan

### SPIROMETRY

### BONE DENSITOMETRY

### COLONOSCOPY

# OUR HOSPITAL SITES AND MEDICAL CENTRES

## HOSPITAL SITES



**DELTA**  
Boulevard du Triomphe, 201  
1160 Brussels



**ST-ANNE ST-REMI**  
Boulevard Jules Graindor, 66  
1070 Brussels



**BRAINE-L'ALLEUD - WATERLOO**  
Rue Wayez, 35  
1420 Braine-l'Alleud

## ONE-DAY CLINICS



**BASILIQUE**  
Rue Pangaert, 37-47  
1083 Brussels



**EDITH CAVELL**  
Rue Général Lotz, 37  
1180 Brussels

## MEDICAL CENTRES



**PARK LEOPOLD**  
Rue du Trône, 100  
1050 Brussels



**CITYCLINIC CHIREC LOUISE**  
Avenue Louise, 235B  
1050 Brussels



**EUROPE - LAMBERMONT**  
Rue des Pensées, 1 - 5  
1030 Brussels



**JEAN MONNET**  
Avenue Jean Monnet, 12  
1400 Nivelles